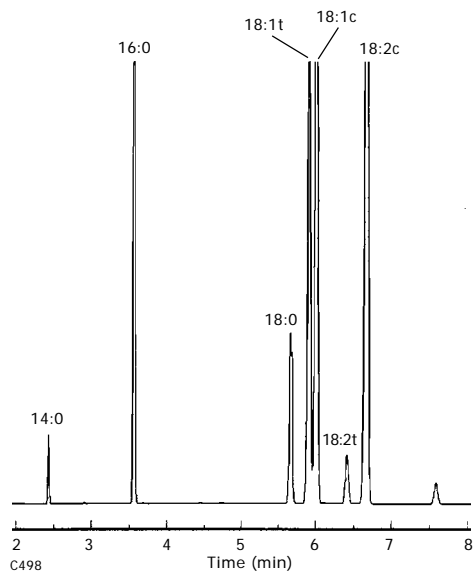


FAME Reference Standard. Note the critical separation between the 18:1 cis and trans isomers is practically identical on DB-225 (A) and DB-225ms (B).

A. Column: DB-225

J&W P/N: 122-2232
Carrier: Hydrogen at 40 cm/sec
Oven: 200°C isothermal
Injector: Split 1:50, 250°C
Detector: FID
Nitrogen makeup gas at 30 mL/min



B. Column: DB-225ms

J&W P/N: 122-2932
Carrier: Hydrogen at 40 cm/sec
Oven: 200°C isothermal
Injector: Split 1:50, 250°C
Detector: FID
Nitrogen make-up gas at 30 mL/min

