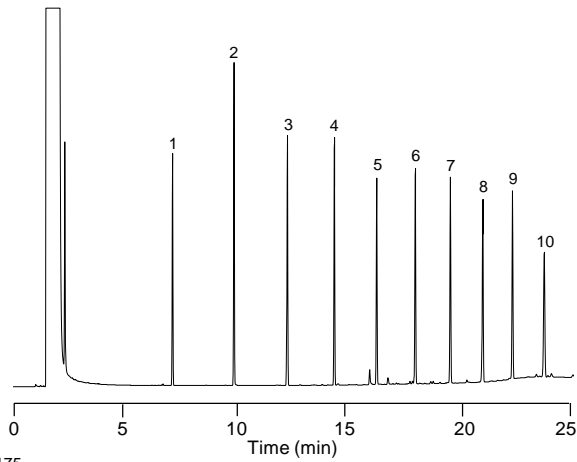


## Diesel Fuel

**Column:** DB-5ms  
30 m x 0.53 mm I.D., 1.5  $\mu$ m  
**J&W P/N:** 125-5532  
**Carrier:** Helium at 48.5 cm/sec, measured at 60°C  
**Oven:** 60°C for 2 min  
60-300°C at 12°/min  
300°C for 10 min  
**Injector:** Megabore Direct, 280°C  
1  $\mu$ L injection in hexane  
**Detector:** FID, 250°C  
Nitrogen makeup gas at 30 mL/min

1. *n*-C<sub>10</sub>, Decane
2. *n*-C<sub>12</sub>, Dodecane
3. *n*-C<sub>14</sub>, Tetradecane
4. *n*-C<sub>16</sub>, Hexadecane
5. *n*-C<sub>18</sub>, Octadecane
6. *n*-C<sub>20</sub>, Eicosane
7. *n*-C<sub>22</sub>, Docosane
8. *n*-C<sub>24</sub>, Tetracosane
9. *n*-C<sub>26</sub>, Hexacosane
10. *n*-C<sub>28</sub>, Octacosane

## Diesel Fuel Standard 50 ng/component



C175

## Diesel Fuel 0.6 mg/mL

