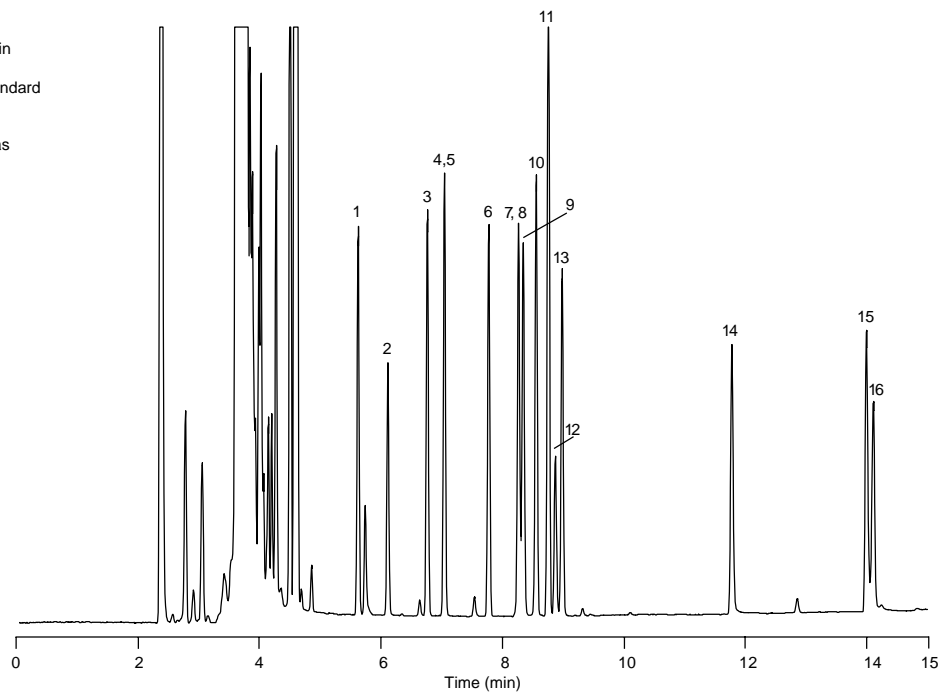


## Phenols

**Column:** DB-5ms  
30 m x 0.25 mm I.D., 0.5 µm  
**J&W P/N:** 122-5536  
**Carrier:** Helium at 22 cm/sec,  
measured at 100°C  
**Oven:** 100°C for 1 min  
100-270°C at 10°/min  
**Injector:** Split 1:50, 250°C  
1 µL of 50 ng/µL standard  
in toluene/*p*-xylene  
**Detector:** FID, 300°C  
Nitrogen makeup gas  
at 30 mL/min

1. Phenol
2. 2-Chlorophenol
3. *o*-Cresol
4. *m*-Cresol
5. *p*-Cresol
6. 2,6-Xylenol
7. 2,4-Xylenol
8. 2,5-Xylenol
9. 2-Nitrophenol
10. 3,5-Xylenol
11. 2,3-Xylenol
12. 2,4-Dichlorophenol
13. 3,4-Xylenol
14. 2,4,6-Trichlorophenol
15. 2,4-Dinitrophenol
16. 1-Naphthol



C400