

1,3-Butadiene

Column: **DB-624**

25 m x 0.20 mm I.D., 1.12 µm

P/N: **128-1324**

Carrier: Helium at 1.0 mL/min

Oven: -20°C for 3 min

-20 - 200°C at 4°/min

20 - 200°C at 8°/min

200°C for 10 min

Injector: Split 1:150, 250°C

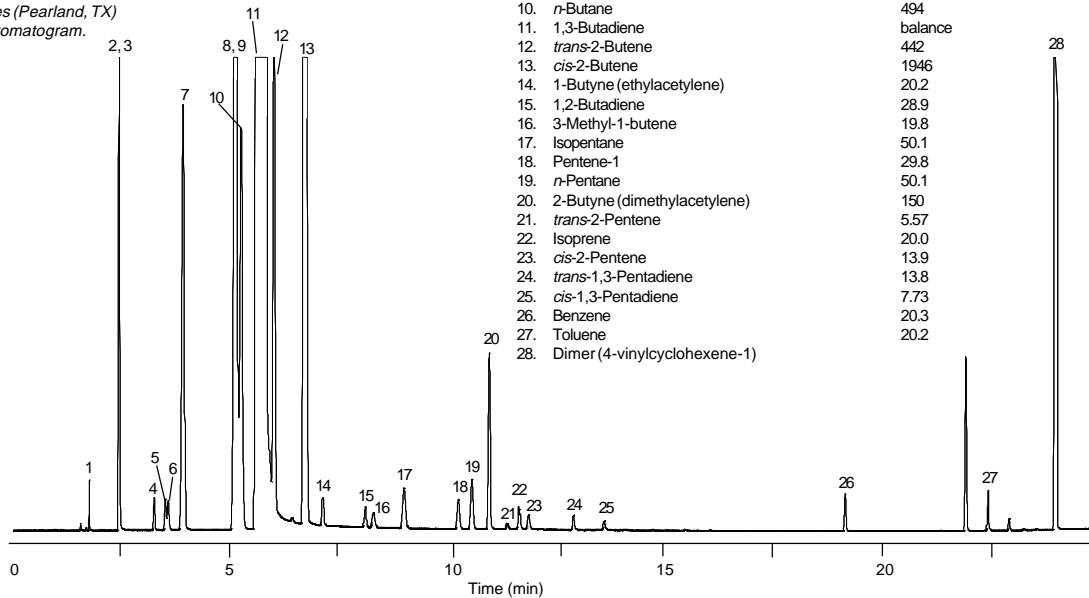
0.5 µL injection

Detector: FID, 250°C

Agilent Technologies wishes to thank DCG Industries (Pearland, TX) for providing this chromatogram.

Refined Butadiene Standard

Component	Gravimetric concentration (PPM)
1. Acetylene	20.7
2. Propane	19.8
3. Propylene	296
4. Propadiene (allene)	21.1
5. Propyne (methylacetylene)	21.0
6. Cyclopropane	20.0
7. Isobutane	506
8. Butene-1	999
9. Isobutylene	495
10. n-Butane	494
11. 1,3-Butadiene	balance
12. trans-2-Butene	442
13. cis-2-Butene	1946
14. 1-Butyne (ethylacetylene)	20.2
15. 1,2-Butadiene	28.9
16. 3-Methyl-1-butene	19.8
17. Isopentane	50.1
18. Pentene-1	29.8
19. n-Pentane	50.1
20. 2-Butyne (dimethylacetylene)	150
21. trans-2-Pentene	5.57
22. Isoprene	20.0
23. cis-2-Pentene	13.9
24. trans-1,3-Pentadiene	13.8
25. cis-1,3-Pentadiene	7.73
26. Benzene	20.3
27. Toluene	20.2
28. Dimer (4-vinylcyclohexene-1)	



C777