

EPA Volatiles by GC/MS (Split Injector)

Column: DB-624

60 m x 0.25 mm I.D., 1.4 µm

J&W P/N: 122-1364

Carrier: Helium at 31 cm/sec, measured at 40°C

Oven: 40°C for 3 min

40-90°C at 8°/min

90°C for 4 min

90-200°C at 6°/min

200°C for 5 min

Injector: Purge and trap (O.I.A. 4560)

Sample: 40 ppb per each component in 5 mL water

Purge: Helium for 11 min at 40 mL/min

Trap: Tenax/Silica Gel/Carbosieve

Desorb: 0.6 min at 220°C

Interface: Split injector at 110°C

with split flow set at 30 mL/min

Detector: MSD, 235°C transfer line, full scan 35-260 amu (m/z 44 subtracted)

Compound list for both chromatograms

(NOTE: Some compounds not present in both chromatograms)

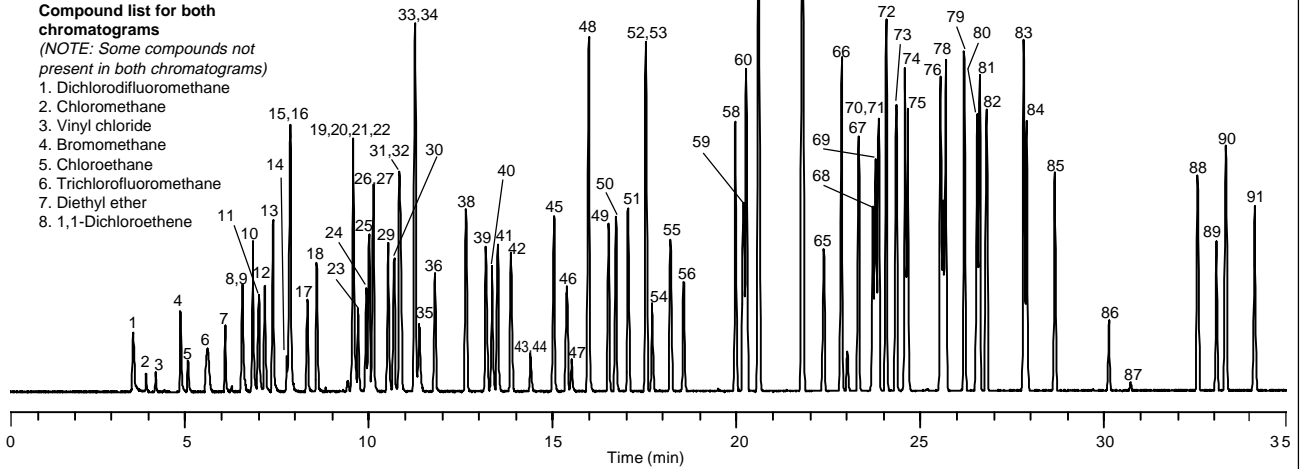
1. Dichlorodifluoromethane
2. Chloromethane
3. Vinyl chloride
4. Bromomethane
5. Chloroethane
6. Trichlorofluoromethane
7. Diethyl ether
8. 1,1-Dichloroethene

9. Acetone
10. Iodomethane
11. Carbon disulfide
12. Allyl chloride
13. Methylene chloride
14. Acrylonitrile
15. Methyl-*tert*-butyl ether
16. *trans*-1,2-Dichloroethene
17. Hexane
18. 1,1-Dichloroethane
19. 2-Butanone
20. *cis*-1,2-Dichloroethene
21. 2,2-Dichloropropane
22. Propionitrile
23. Methyl acrylate
24. Methacrylonitrile

25. Bromochloromethane
26. Tetrahydrofuran
27. Chloroform
28. Pentafluorobenzene (IS)
29. 1,1,1-Trichloroethane

30. 1-Chlorobutane
31. 1,1-Dichloropropene
32. Carbon tetrachloride
33. Benzene
34. 1,2-Dichloroethane
35. 2,2-Dimethylhexane
36. Fluorobenzene (IS)
37. 1,4-Difluorobenzene (IS)
38. Trichloroethene
39. 1,2-Dichloropropane
40. Methyl methacrylate

Method 504 standards are found on pages 131



Column: DB-VRX

60 m x 0.25 mm I.D., 1.4 µm

J&W P/N: 122-1564

Carrier: Helium at 30 cm/sec, measured at 45°C

Oven: 45°C for 10 min

45-190°C at 12°/min

190°C for 2 min

190-225°C at 6°/min

225°C for 1 min

Injector: Purge and trap (O.I.A. 4560)

Sample: 40 ppb per each component in 5 mL water

Purge: Helium for 11 min at 40 mL/min

Trap: Tenax, Silica gel, Carbosieve

Desorb: 0.6 min at 220°C

Interface: Split injector at 110°C

with split flow set at 30 mL/min

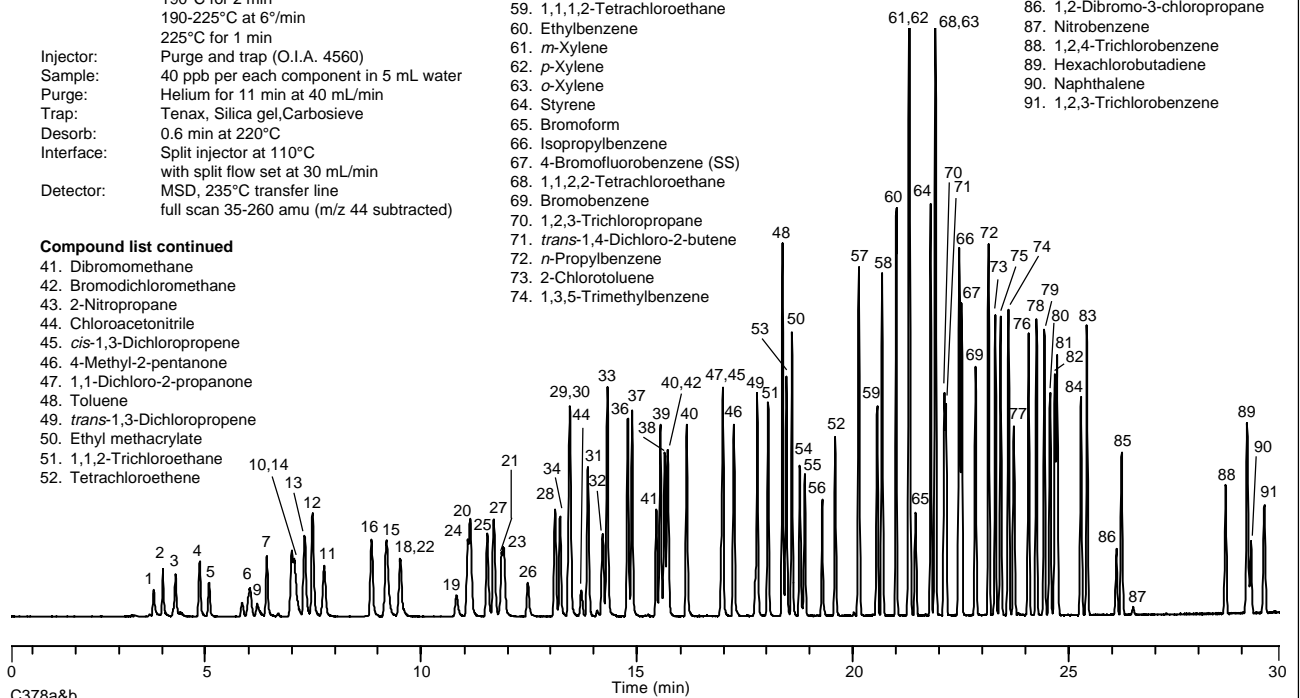
Detector: MSD, 235°C transfer line, full scan 35-260 amu (m/z 44 subtracted)

Compound list continued

41. Dibromomethane
42. Bromodichloromethane
43. 2-Nitropropane
44. Chloroacetonitrile
45. *cis*-1,3-Dichloropropene
46. 4-Methyl-2-pentanone
47. 1,1-Dichloro-2-propanone
48. Toluene
49. *trans*-1,3-Dichloropropene
50. Ethyl methacrylate
51. 1,1,2-Trichloroethane
52. Tetrachloroethene

53. 1,3-Dichloropropane
54. 2-Hexanone
55. Dibromochloromethane
56. 1,2-Dibromoethane
57. 1-Chloro-3-fluorobenzene (IS)
58. Chlorobenzene
59. 1,1,1,2-Tetrachloroethane
60. Ethylbenzene
61. *m*-Xylene
62. *p*-Xylene
63. *o*-Xylene
64. Styrene
65. Bromoform
66. Isopropylbenzene
67. 4-Bromofluorobenzene (SS)
68. 1,1,2,2-Tetrachloroethane
69. Bromobenzene
70. 1,2,3-Trichloropropane
71. *trans*-1,4-Dichloro-2-butene
72. *n*-Propylbenzene
73. 2-Chlorotoluene
74. 1,3,5-Trimethylbenzene

75. 4-Chlorotoluene
76. *tert*-Butylbenzene
77. Pentachloroethane
78. 1,2,4-Trimethylbenzene
79. *sec*-Butylbenzene
80. 1,3-Dichlorobenzene
81. *p*-Isopropyltoluene
82. 1,4-Dichlorobenzene
83. *n*-Butylbenzene
84. 1,2-Dichlorobenzene
85. Hexachloroethane
86. 1,2-Dibromo-3-chloropropane
87. Nitrobenzene
88. 1,2,4-Trichlorobenzene
89. Hexachlorobutadiene
90. Naphthalene
91. 1,2,3-Trichlorobenzene



C378a&b