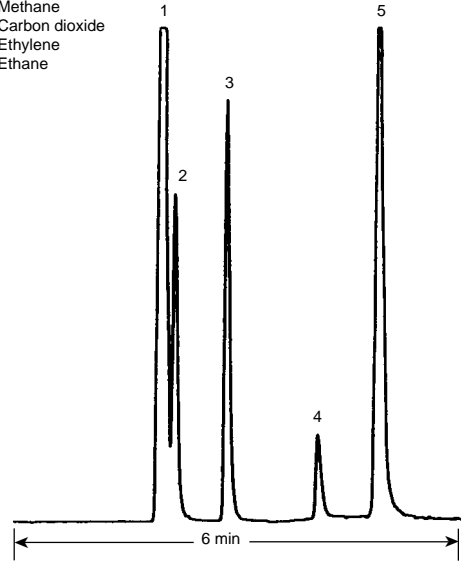


Air, Carbon Dioxide, C₁ and C₂

Column: GS-Q
30 m x 0.53 mm I.D.
J&W P/N: 115-3432
Carrier: Hydrogen at 4 mL/min
Oven: 30°C for 3 min
30-80°C at 20°/min
Injector: Split 1:10, 250°C
Detector: TCD, 250°C

1. Air
2. Methane
3. Carbon dioxide
4. Ethylene
5. Ethane



C149