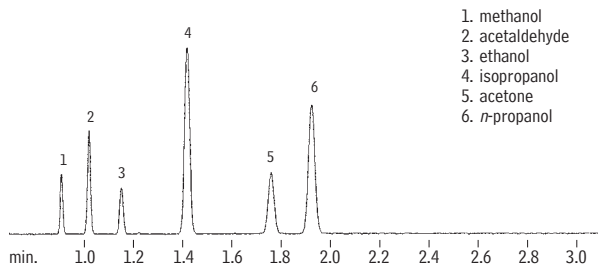


Blood Alcohol

Rtx[®]-BAC1 & Rtx[®]-BAC2 (0.32mm ID Columns)

(headspace analysis)

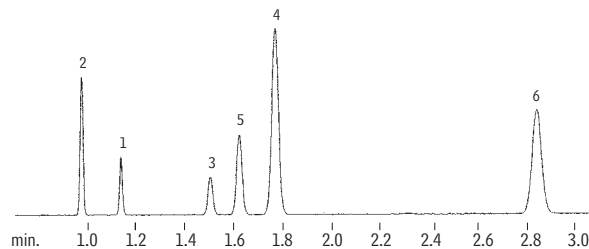


1. methanol
2. acetaldehyde
3. ethanol
4. isopropanol
5. acetone
6. *n*-propanol

30m, 0.32mm ID, 1.8 μ m Rtx[®]-BAC1 (cat.# 18003)

Dual-column analysis using a two-hole ferrule.
1.0mL headspace sample of a blood alcohol mix
Oven temp.: 40°C
Inj. temp.: 200°C
Carrier gas: helium
Sample equilibration: 70°C, 15 min.
Vial pressure: 30psi
Vial pressurization time: 0.15 min.
Vial sampling time: 0.01 min.

Conc.
w/v
0.1%
0.2%
0.2%
0.1%
0.01%
0.1%



GC_PH00241

30m, 0.32mm ID, 1.2 μ m Rtx[®]-BAC2 (cat.# 18002)

Transfer line:
Transfer line temp.:
Injection port sleeve:
Split flow:

0.32mm ID Hydroguard fused silica tubing
200°C
2mm ID
20mL/min.